

CA SecureEmail

CA SecureEmail encrypts and digitally signs emails.

Features:

- Much easier to use than similar products.
- Totally self-contained: no outer program needed to change secret keys.
- Highest security.

CA SecureEmail adds a tab in the MS Office Outlook Ribbon that remains hidden in Preview and in the other Outlook Views.

Clicking on the CA SecureEmail tab, the three main choices (Actions, Keys, Options) will be shown.

System Requirements:

- Microsoft Windows Xp or newer
- Microsoft Office Outlook 2007 or newer

Actions: Encryption

- Open a new message with the standard Outlook command.
- Write message including eventual attachments
- Click on the Encrypt tab.
- Send with the standard command: everything, attachments included, will be encrypted using the public key of the receiver, automatically recovered from the key repository once his/her email address is typed.

Actions: Decryption

- Perfectly symmetric to Encryption.

In both actions the user will be asked:

- to insert a password
- to choose an option to deal with the message.

Keys

To import or attach public keys or renew secret ones.

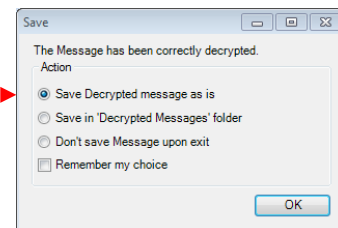
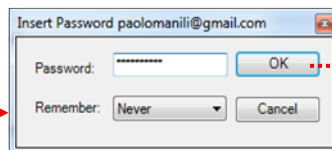
Options (main ones)

- Network: settings for the Local Key Database or Key server.
- Security: password management and options for sent-message handling.
- Behavior: options for received messages handling.

- The user public key can be attached to the message.



- The sender public key can be extracted and stored.



- Any alphanumeric passphrase will create user's secret and public key. Keys can also be imported from a Key Server, a file or clipboard.

